

InqNote®

Brief Overview

Virtuality On, UK



<https://www.v-on.eu>



info@v-on.eu

CONTENT

1. Introduction
2. Core functions
3. Extended functions
4. A word on security

Introduction

InqNote® is the *only* cloud-based platform that has the combined functionalities of an electronic laboratory notebook (ELN) and that of a scientific document management system (DMS).

Imagine if you could, in an *integrated virtual desktop* from any browser, anywhere:

- Brain storm your ideas with your team members
- Edit Office® files without any dependencies
- Visually plan phases of your experiments
- Mange tasks and projects visually
- Build SOPs, design result templates
- Save your observations in notebooks
- All with private stores only available to your team, complete with document version control, e-signatures, GLP and 21 CFR part 11 compliance.

“InqNote® is the *only* cloud-based platform that has the combined functionalities of an electronic laboratory notebook (ELN) and that of a scientific document management system.”

Core functions

Here are some of the core functions of InqNote®

Diagramming modules are available for brain storming and formal diagramming [figure 1]. Once a diagram is created, it will be versioned and can be shared with team members.

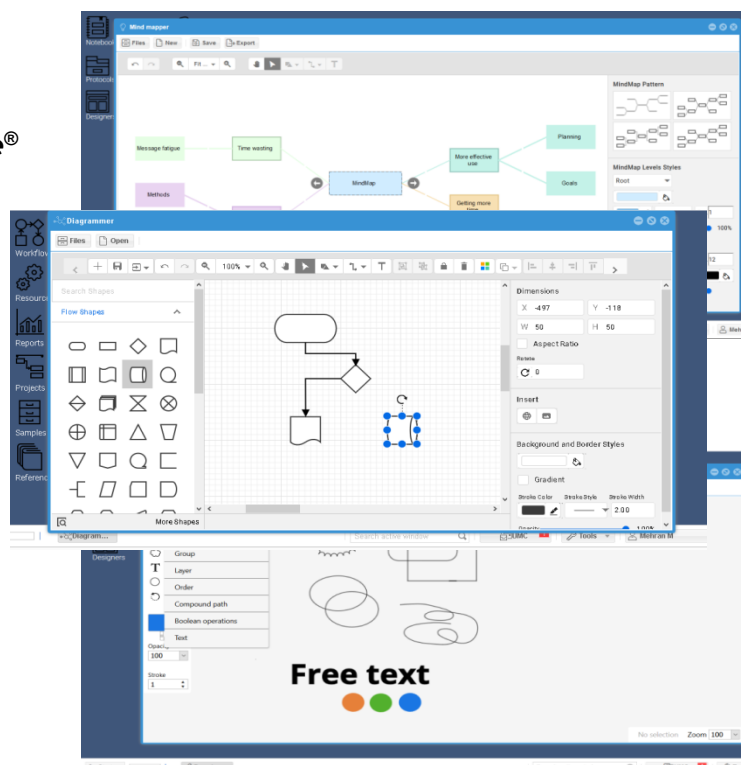


Figure 1: Some of the diagramming tools available

Edit Microsoft Office Word®, Excel® documents directly in the browser with no dependencies and no extra licensing fees, view PDF files without using Adobe Acrobat®, [figure 2]. The spreadsheet supports over 450+ formulae and an array of chart types. Import and export in .docx, .xlsx and .pdf complete with seamless document version control.

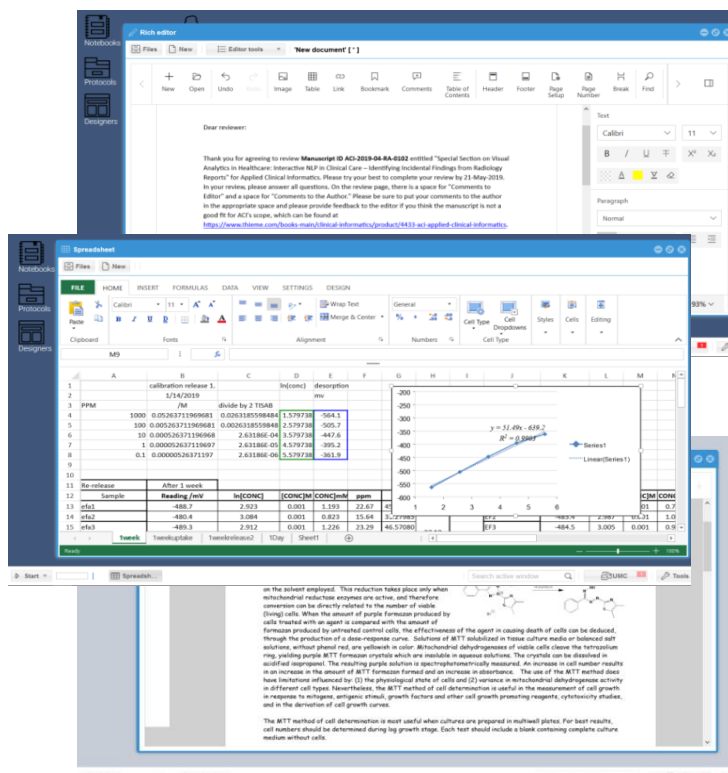


Figure 2: Edit Office® files in the browser

“Edit Microsoft Office Word®, Excel® documents directly in the browser with no dependencies and no extra licensing fees.”

Build, upload and view protocols followed by sharing with your team members with a range of permissions [figure 3].

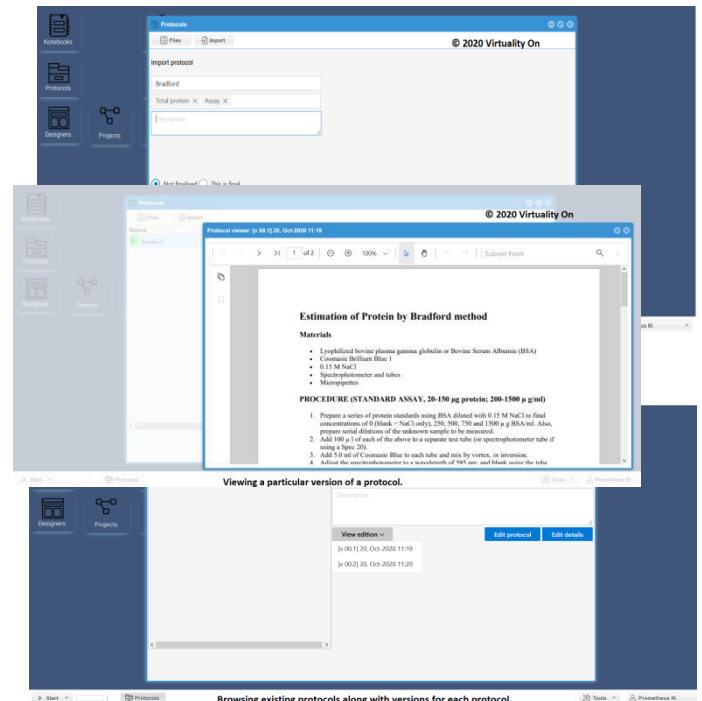


Figure 3: Protocol upload, versions and viewing.

Design data entry forms using the template and sheet designers [figure 4]. Apply business, validation rules and workflows to the data being collected on the forms. Fill in blank data entry forms inside a notebook.

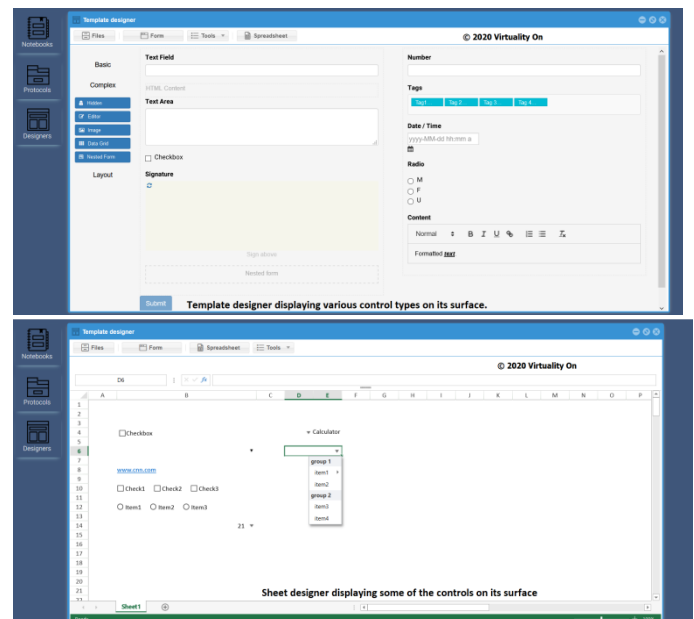


Figure 4: Template and sheet designers displaying controls

Categorise results of studies in notebooks, [figure 5]. Add structured results such as templates, or any other type of file. Ability to add outputs from the extended components (see page 5) into notebooks. you will be able to interact with it on a notebook page.

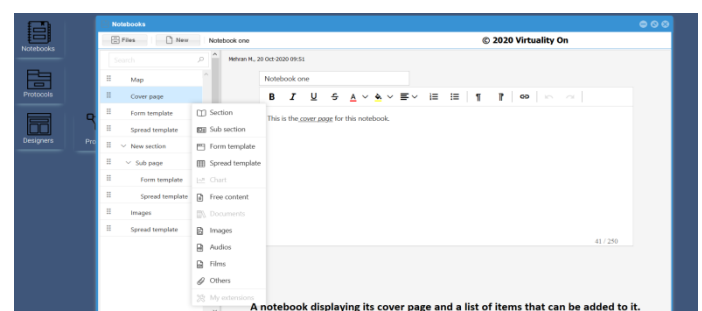


Figure 5: A notebook displaying its front cover and items that can be added to it

Use Kanban boards, Gantt charts and schedulers to plan and manage tasks, [figure 6]. The project management app consists of Kanban boards, Gantt charts and multi-calendrical schedulers. The Kanban boards are used to break down experiments or projects into parts and tasks (or cards). Associate each task with colour, description, start and end dates, with an individual member of your team. Each schedule can be formatted with Gregorian, Chinese, Persian or Arabic calendars.

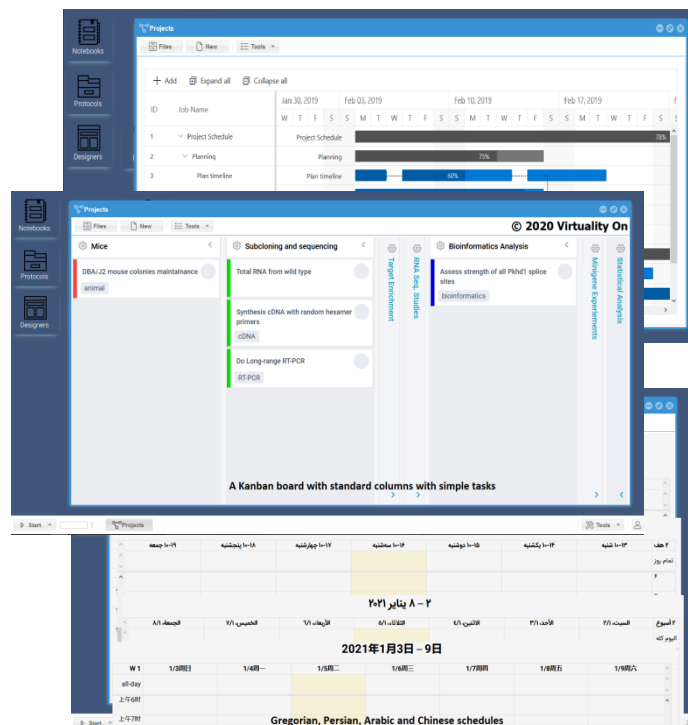


Figure 6: Some of the project management tools that are available from the virtual desktop.

Unique ability to create reports, interactive BI dashboards from data entry forms. Design, test and validate reporting and BI dashboards, available as embedded or enterprise-wide services, in an integrated virtual desktop all done via your browser.

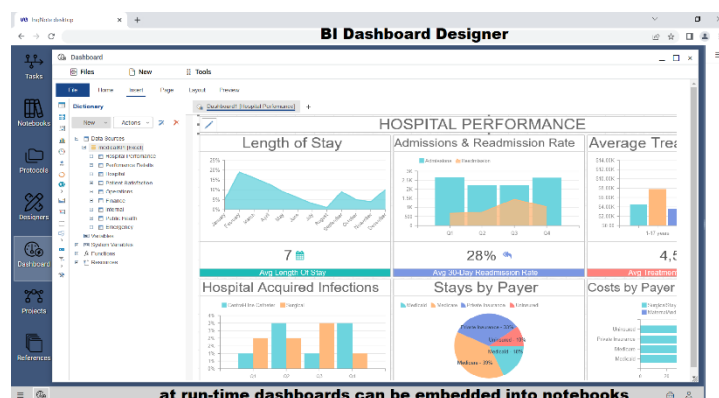


Figure 7: Reporting and BI dashboard designers in the browser

Extended functions

InqNote® can be customized to have specialized functions to suit the needs of the users.

Load, examine, analyse and store an array of spectra, such as IR, Raman, UV/Visible, MS, NMR and other types in a multi-modality spectral extension.

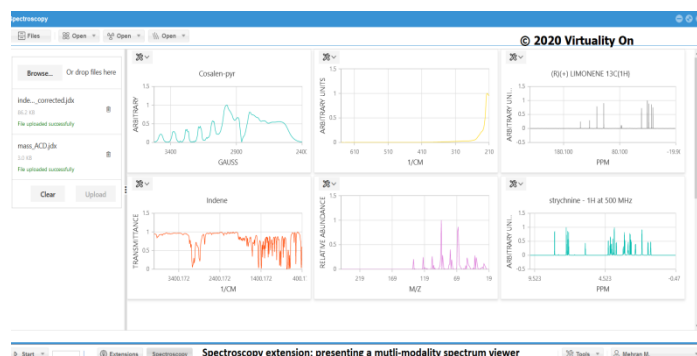


Figure8: The Spectroscopy extension, displaying the multi-modality spectra viewer analyser.

Subscribe to the fully self-contained Patient Record extension for the full management of ANY type of records. Design and build all types of data entry form, follow-ups, file attachments. Attach to your PACS servers and access imaging histories within the patient record. Design and embed BI interactive dashboards.

The screenshot shows the 'Patient Record Extension' interface. It displays a 'Completed' form for a patient named 'Minerva M.' dated '30 May 2022 08:26'. The form includes sections for 'Original inflammation', 'Soft plaque buildup', 'Hard calc. buildup', 'Status', 'Home care effectiveness', 'Periodontal condition', 'Periodontal diagnosis', and 'Periodontitis'. Each section has radio button options for different levels of severity or status. The interface includes a sidebar with navigation options like 'Tasks', 'Support', 'Protocols', 'Imaging', 'Followups', 'Plans', 'Dashboards', and 'Attachments'.

Figure9: The Patient Record extension, displaying a completed, dated and versioned data entry form.

Need of getting outside users involved in studies, then subscribe to the Survey Application extension. Design, test, validate and collect e-surveys from within your virtual desktop

The screenshot displays the 'Survey App designer panel' for a survey titled 'Minimum data reporting form - for suspected and probable cases of COVID-19'. The interface is in 'Design' mode, showing a preview of 'Page 1' with a description field and a 'Unique Case ID / Cluster' field. The right sidebar contains a 'General' section with fields for 'Name', 'Title', 'Description', 'Visible', and 'Read-only'. The bottom of the panel shows a 'Page 1' description area with a 'Duplicate' and 'Delete' button.

Figure10: The Survey Application extension, displaying a survey in designing mode.

A word on security

InqNote® is designed such that each client data is stored on its own private server(s). The web API service accessing the client's databases is also unique to each client's requirement. All the backend stores and services run inside a private local area network without access to Internet. A team member with the admin role is only able to send the invites to users who are known to him or her. Upon successful registration of a user, he or she will need to login to **InqNote®** with an additional two factor authentication pin generated on the user's smart phone. Once logged in to **InqNote®** platform, the connection is encrypted.



Virtuality On, UK



<https://www.v-on.eu>



info@v-on.eu